

FIRST PARISH FUTURE PLANNING -- Overview of Planning Process
A Plan to Insure the Well Being and Renewal of First Parish for the Future

Planning Rationale: Standard practice among our churches involves the carrying out of long range planning with associated financial needs about every 10 years and moving beyond the limitations of year to year planning. First Parish Wayland carried out such long range planning in 1982 and 1992. Having been 15 years since the last such effort, it is an appropriate time to begin such an important practice again. We will be building upon the planning assessment launched last year and prioritized by the Parish Committee in the spring.

Purposes: To **Sustain** what we value. To **Revitalize** our thinking and purposes, means and action. To **Secure** First Parish for those to come.

Planning Assumptions:

- The Plan will build on the 2006-2007 Planning Assessment carried out by the Parish Committee.
- First Parish is in a strong position and the new plan will build on strength.
- The Plan will be mindful and respectful of the mission of First Parish.
- The planning process will be an inclusive one and input will be sought from all church committees and members of the First Parish congregation.
- The Plan will be developed over the course of the 2007-2008 church year with a goal of adopting the Plan at the May annual meeting.
- The Plan will provide goals, objectives, and implementation steps where possible, that will serve as a roadmap for First Parish for the period July 1, 2008 to June 30, 2013.
- The Plan will consider financial needs in terms of operation, capital and endowment.
- Some issues that may serve as areas of focus for the planning process will include, among others: endowment requirements, intern program, adult programming, need for a new/renovated organ, social action, facility needs, religious education, and new programs.

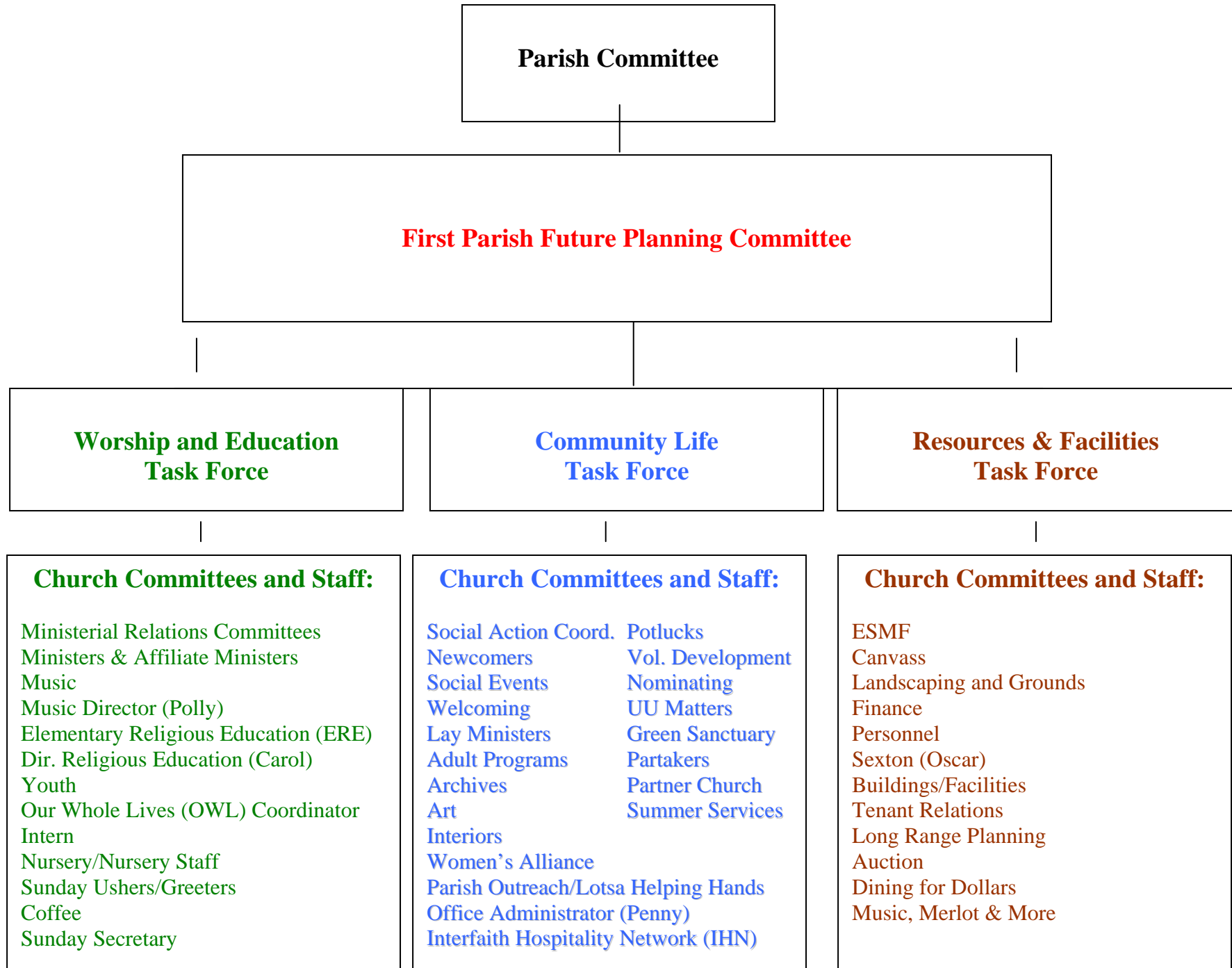
Planning Structure and Calendar:

- The Plan will be developed out of a comprehensive planning process and structure, organized around a First Parish Future Planning Committee and three Task Forces focused on Worship and Education, Community Life, and Resources and Facilities.
- Each Task Force will have two Co-Chairs as well as a Facilitator.
- The Co-Chairs for the FPFPC will be Ken Sawyer and John Beard.

Outcomes of the Planning Process:

- Document containing approximately 2-5 broad goals; and goals, objectives, and action steps in the areas of Worship and Education, Community Life, and Resources and Facilities.
- Accompanying financial plan laying out the implications for revenue and expenses over the five-year period.

FIRST PARISH FUTURE PLANNING STRUCTURE



First Parish Future Planning Committee

Ken Sawyer, co-Chair

John Beard, co-Chair

Malcolm Astley, Chair Parish Committee

Erin Splaine, Associate Minister

Worship and Education Task Force

Jill Grenon, co-chair

John Thompson, co-chair

Nathalie Thompson, facilitator

Beth Butler

Ann Drouilhet

Becky Leonard

Suzanne Reitz

Bill Ryan

Skip Sweitzer

Jane Williamson

Jon Winder

Community Life Task Force

Susan Keyes, co-chair

Bill Morrison, co-chair

Lynne Cavanaugh, facilitator

Kathe Bernstein

Lelia Elliston

Mary Alice Hoes

Robyn Jones

Bob Mainer

Eric Marinakas

Pat Reinhardt

Erin Splaine

Suzanne Tiberii

Resources and Facilities Task Force

Chris Stix, co-chair

Stephen Winthrop, co chair

Jack Dresser, facilitator

Kathie Cromwell

Sandy Hoyt

Todd Leib

Mary Trageser